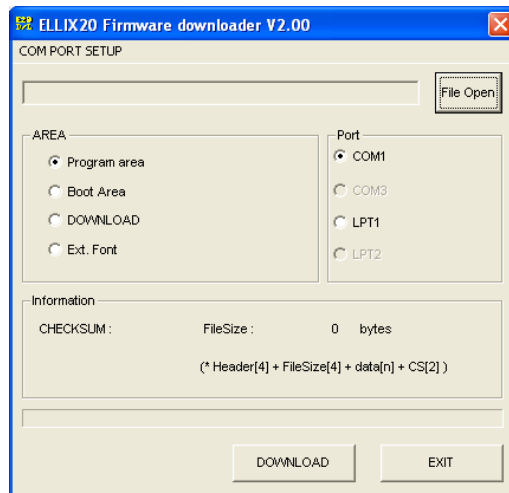


ELLIX 20 Firmware Downloading Instructions

To load new or updated firmware into the ELLIX 20 receipt printer, you will need:

- A PC.
- Serial cable P/N 522087 or parallel cable P/N 250078
- The free download utility: PcDownLoadV2.exe.
- The program file, for example: E20_051230_90A6.E20

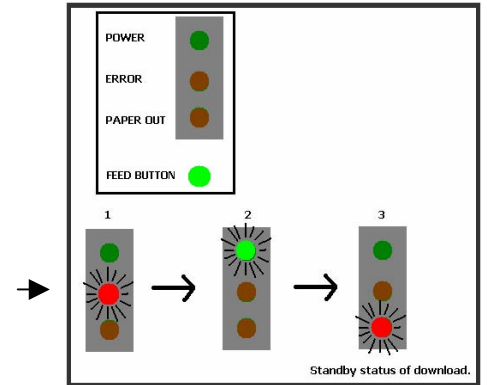
1. Download the download utility and download file from the dealer area of www.crs-usa.com. Remember and make note of the path where you locate the downloaded file.
2. Before beginning the update, check the existing firmware version number of your ELLIX 20 printer. (Power up the ELLIX 20 with the **FEED** pressed to print the version number.) If your ELLIX 20 firmware version is lower than "STD 1.06", you need update both Program area and BOOT area. (See step #14.)
3. Run "PcDownLoadV2.exe". The program window displays:



4. Click **File Open** and open the program file.
5. Power **OFF** the ELLIX 20.
6. Set all ELLIX 20 dip switches to **OFF**.
7. Connect the PC to the ELLIX 20 printer with a serial or parallel cable (see above).

- Open the Printer cover all of the way. Power **ON** the ELLIX 20 while holding the **FEED** button. (Note that when the printer cover is open, the **FEED** button is the green button located inside the printer compartment.) Continue to hold the **FEED** button until the PAPER OUT LED is **ON**.

(Note the LED sequence during power up: First the ERROR LED is ON, then the POWER LED is ON and then the PAPER OUT LED is ON.)



- The ELLIX 20 is now ready for the firmware download.
- Leave the Program Area option button selected (default).
- Select the port you are connected to, LPT1 or COM1.
- Click **DOWNLOAD** to begin the download. The progress bar will advance as the download proceeds.

Select "Program area" at step #10

If necessary, select "Boot Area" at step #14

Select "COM1" if using a serial connection. Select "LPT1" if using a parallel connection. (See step #11)

- When Download is completed, the ELLIX 20 buzzer will activate and the LED will blink, and then it will turn off automatically.
- If you are updated a printer with a firmware version is lower than "STD 1.06", now select the "Boot Area" option button. Put the printer back into Download Mode (see step #8). Click **DOWNLOAD** to begin the boot area download. When Download is completed, the ELLIX 20 buzzer will activate and the LED will blink, and then it will turn off automatically. Skip this step if you are only updating the program area.
- Power the ELLIX 20 **ON** again. The printer will now operate under new downloaded program.

CAUTION: Don't pull out the cable or turn off power during the updating operation. If problems occur during updating, flash memory may be damaged and ELLIX 20 will not operate properly.

NOTE: If download program's progress bar is not going forward, check the cable connection between PC and ELLIX 20.